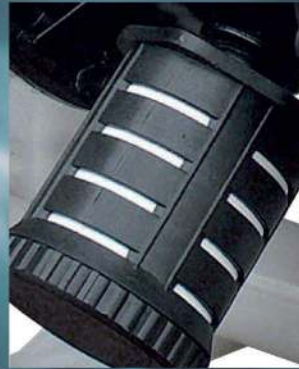


Product Catalogue



ASHTON
PUMPS



Non-Metallic Pumps

Ashton Non-Metallic range of air driven double diaphragm pumps are available in four different sizes, ranging from 1/2" through to 2" ports, pumping up to a maximum capacity of 568 litres per minute. Available in a variety of materials, from Polypropylene, PVDF (Kynar) & Acetal. Capable of handling a wide variety of products from acid, alkaline, hydro-carbons, pharmaceutical, water treatment, paints and inks etc.

- Seal-less design, no mechanical seals or pack glands
- Lubrication free, non-stall easy to access air valve design
- Completely pneumatically driven, no need for electric
- Wide range of spares interchangeability, keeping down time & stock holdings to a minimum
- Dry running capabilities, without causing long term damage to the pump
- Inherent self priming design, ideal for emptying barrels, bulk containers, tanks & bunds
- Variable flow range, from zero lpm to pumps maximum design capacity
- Easy to strip, assemble & maintain

Contact your local Ashton Pump distributor to discuss your requirements further.

Non-Metallic Pumps

AT15



Specifications

Maximum Free Flow - Water	57 lpm (15 US Gpm)
Maximum Working Pressure	7 Barg (100 Psig)
Inlet/Outlet Port Size/Standard	1/2" & 3/4" NPT/BSP Female
Maximum Air Consumption	0.672 m ³ /min (28 scfm)
Maximum Dry Suction Lift - Water	4.5 metres (15 Feet)
Maximum Particle Size	2.5 mm (3/32 Inch)
Approximate Displacement/Stroke	0.15 Litres (0.04 US Gallons)
Typical Sound Level at 4.9 Bar (70 Psi)	74 dBA
Typical Working Temperature Limits	5 - 65 °C
Elastomer Options - Diaphragms/Valves	PTFE/Santoprene/Buna-N

AT25



Specifications

Maximum Free Flow - Water	151 lpm (40 US Gpm)
Maximum Working Pressure	7 Barg (100 Psig)
Inlet/Outlet Port Size/Standard	1" NPT/BSP Female
Maximum Air Consumption	1.7 m ³ /min (60 scfm)
Maximum Dry Suction Lift - Water	5.5 metres (18 Feet)
Maximum Particle Size	3.2 mm (1/8 Inch)
Approximate Displacement/Stroke	0.57 Litres (0.15 US Gallons)
Typical Sound Level at 4.9 Bar (70 Psi)	76 dBA
Typical Working Temperature Limits	PP 5 - 65 °C/Kynar 5 - 80 °C
Elastomer Options - Diaphragms/Valves	PTFE/Santoprene/Buna-N

AT40



Specifications

Maximum Free Flow - Water	379 lpm (100 US Gpm)
Maximum Working Pressure	7 Barg (100 Psig)
Inlet/Outlet Port Size/Standard	1 1/2" NPT/BSP Female
Maximum Air Consumption	3.5 m ³ /min (125 scfm)
Maximum Dry Suction Lift - Water	5.5 metres (18 Feet)
Maximum Particle Size	4.8 mm (3/16 Inch)
Approximate Displacement/Stroke	1.96 Litres (0.5 US Gallons)
Typical Sound Level at 4.9 Bar (70 Psi)	77 dBA
Typical Working Temperature Limits	PP 5 - 65 °C/Kynar 5 - 80 °C
Elastomer Options - Diaphragms/Valves	PTFE/Santoprene/Buna-N

AT50



Specifications

Maximum Free Flow - Water	568 lpm (150 US Gpm)
Maximum Working Pressure	7 Barg (100 Psig)
Inlet/Outlet Port Size/Standard	2" ANS/DIN Flanges
Maximum Air Consumption	4.9 m ³ /min (175 scfm)
Maximum Dry Suction Lift - Water	5.5 metres (18 Feet)
Maximum Particle Size	6.3 mm (1/4 Inch)
Approximate Displacement/Stroke	3.9 Litres (1.03 US Gallons)
Typical Sound Level at 4.9 Bar (70 Psi)	78 dBA
Typical Working Temperature Limits	PP 5 - 65 °C/Kynar 5 - 80 °C
Elastomer Options - Diaphragms/Valves	PTFE/Santoprene/Buna-N

Aluminium Pumps

AT20



Specifications

Maximum Free Flow - Water	61 lpm (16 US Gpm)
Maximum Working Pressure	7 Barg (100 Psig)
Inlet/Outlet Port Size/Standard	3/4" NPT/BSP Female
Maximum Air Consumption	0.672 m ³ /min (28 scfm)
Maximum Dry Suction Lift - Water	4.5 metres (15 Feet)
Maximum Particle Size	2.5 mm (3/32 Inch)
Approximate Displacement/Stroke	0.15 Litres (0.04 US Gallons)
Typical Sound Level at 4.9 Bar (70 Psi)	74 dBA
Typical Working Temperature Limits	5 - 65 °C
Elastomer Options - Diaphragms/Valves	PTFE/Santoprene/Buna-N

AT25



Specifications

Maximum Free Flow - Water	151 lpm (40 US Gpm)
Maximum Working Pressure	7 Barg (100 Psig)
Inlet/Outlet Port Size/Standard	1" NPT/BSP Female
Maximum Air Consumption	1.7 m ³ /min (60 scfm)
Maximum Dry Suction Lift - Water	5.5 metres (18 Feet)
Maximum Particle Size	3.2 mm (1/8 Inch)
Approximate Displacement/Stroke	0.57 Litres (0.15 US Gallons)
Typical Sound Level at 4.9 Bar (70 Psi)	76 dBA
Typical Working Temperature Limits	5 - 100 °C
Elastomer Options - Diaphragms/Valves	PTFE/Santoprene/Buna-N



AT40



Specifications

Maximum Free Flow - Water	379 lpm (100 US Gpm)
Maximum Working Pressure	7 Barg (100 Psig)
Inlet/Outlet Port Size/Standard	1 1/2" NPT/BSP Female
Maximum Air Consumption	3.5 m ³ /min (125 scfm)
Maximum Dry Suction Lift - Water	5.5 metres (18 Feet)
Maximum Particle Size	4.8 mm (3/16 Inch)
Approximate Displacement/Stroke	1.96 Litres (0.5 US Gallons)
Typical Sound Level at 4.9 Bar (70 Psi)	77 dBA
Typical Working Temperature Limits	5 - 100 °C
Elastomer Options - Diaphragms/Valves	PTFE/Santoprene/Buna-N



AT50



Specifications

Maximum Free Flow - Water	568 lpm (150 US Gpm)
Maximum Working Pressure	7 Barg (100 Psig)
Inlet/Outlet Port Size/Standard	2" NPT/BSP Female
Maximum Air Consumption	4.9 m ³ /min (175 scfm)
Maximum Dry Suction Lift - Water	5.5 metres (18 Feet)
Maximum Particle Size	6.3 mm (1/4 Inch)
Approximate Displacement/Stroke	3.9 Litres (1.03 US Gallons)
Typical Sound Level at 4.9 Bar (70 Psi)	78 dBA
Typical Working Temperature Limits	5 - 100 °C
Elastomer Options - Diaphragms/Valves	PTFE/Santoprene/Buna-N





Aluminium Pumps

Ashton Aluminium range of air driven double diaphragm pumps are available in four different sizes, ranging from $\frac{3}{4}$ " through to 2" ports, pumping up to a maximum capacity of 568 litres per minute. Capable of handling a wide variety of products from water, oils, grease, hydro-carbons, paint, inks, paper and pulp etc.

- Atex certified for EExd hazardous areas
- Seal less design, no mechanical seals or pack glands
- Lubrication free, non-stall easy to access air valve design
- Completely pneumatically driven, no need for electric
- Wide range of spares interchangeability, keeping down time & stock holdings to a minimum
- Dry running capabilities, without causing long term damage to the pump
- Inherent self priming design, ideal for emptying barrels, bulk containers, tanks and bunds
- Variable flow range, from zero lpm to the pumps maximum design capacity
- Easy to strip, assemble & maintain

Contact your local Ashton Pump distributor to discuss your requirements further.





Stainless Steel Pumps

Ashton Stainless Steel range of air driven double diaphragm pumps are available in four different sizes, ranging from $\frac{3}{4}$ " through to 2" ports, pumping up to a maximum capacity of 568 litres per minute. Capable of handling a wide variety of products from acids, alkalies, pharmaceuticals, food & beverage, hydro-carbons, paints and inks etc.

- Atex certified for EExd hazardous areas
- Seal less design, no mechanical seals or pack glands
- Lubrication free, non-stall easy to access air valve design
- Completely pneumatically driven, no need for electric
- Wide range of spares interchangeability, keeping down time & stock holdings to a minimum
- Dry running capabilities, without causing long term damage to the pump
- Inherent self priming design, ideal for emptying barrels, bulk containers, tanks & bunds.
- Variable flow range, from zero lpm to the pumps maximum design capacity
- Easy to strip, assemble & maintain

Contact your local Ashton Pump distributor to discuss your requirements further.



Stainless Steel Pumps

AT20



Specifications

Maximum Free Flow - Water	61 lpm (16 US Gpm)
Maximum Working Pressure	7 Barg (100 Psig)
Inlet/Outlet Port Size/Standard	3/4" NPT/BSP Female
Maximum Air Consumption	0.672 m ³ /min (28 scfm)
Maximum Dry Suction Lift - Water	4.5 metres (15 Feet)
Maximum Particle Size	2.5 mm (3/32 Inch)
Approximate Displacement/Stroke	0.15 Litres (0.04 US Gallons)
Typical Sound Level at 4.9 Bar (70 Psi)	74 dBA
Typical Working Temperature Limits	5 - 65 °C
Elastomer Options - Diaphragms/Valves	PTFE/Santoprene/Buna-N

AT25



Specifications

Maximum Free Flow - Water	151 lpm (40 US Gpm)
Maximum Working Pressure	7 Barg (100 Psig)
Inlet/Outlet Port Size/Standard	1" NPT/BSP Female
Maximum Air Consumption	1.7 m ³ /min (60 scfm)
Maximum Dry Suction Lift - Water	5.5 metres (18 Feet)
Maximum Particle Size	3.2 mm (1/8 Inch)
Approximate Displacement/Stroke	0.57 Litres (0.15 US Gallons)
Typical Sound Level at 4.9 Bar (70 Psi)	76 dBA
Typical Working Temperature Limits	5 - 100 °C
Elastomer Options - Diaphragms/Valves	PTFE/Santoprene/Buna-N



AT40



Specifications

Maximum Free Flow - Water	379 lpm (100 US Gpm)
Maximum Working Pressure	7 Barg (100 Psig)
Inlet/Outlet Port Size/Standard	1 1/2" NPT/BSP Female
Maximum Air Consumption	3.5 m ³ /min (125 scfm)
Maximum Dry Suction Lift - Water	5.5 metres (18 Feet)
Maximum Particle Size	4.8 mm (3/16 Inch)
Approximate Displacement/Stroke	1.96 Litres (0.5 US Gallons)
Typical Sound Level at 4.9 Bar (70 Psi)	77 dBA
Typical Working Temperature Limits	5 - 100 °C
Elastomer Options - Diaphragms/Valves	PTFE/Santoprene/Buna-N



AT50



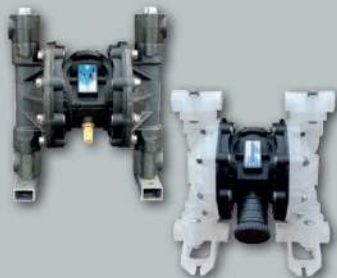
Specifications

Maximum Free Flow - Water	568 lpm (150 US Gpm)
Maximum Working Pressure	7 Barg (100 Psig)
Inlet/Outlet Port Size/Standard	2" NPT/BSP Female
Maximum Air Consumption	4.9 m ³ /min (175 scfm)
Maximum Dry Suction Lift - Water	5.5 metres (18 Feet)
Maximum Particle Size	6.3 mm (1/4 Inch)
Approximate Displacement/Stroke	3.9 Litres (1.03 US Gallons)
Typical Sound Level at 4.9 Bar (70 Psi)	78 dBA
Typical Working Temperature Limits	5 - 100 °C
Elastomer Options - Diaphragms/Valves	PTFE/Santoprene/Buna-N



Specialist & Cast Iron Pumps

Dual Inlet/Outlet Ports



Ashton dual inlet/outlet ported pumps allows you to basically have two pumps in one, as opposed to having just one inlet & outlet port as on the conventional diaphragm pump, you now have two. This is beneficial as the functionality allows the pump to transfer two different products at the same time. This design can also be used to mix or separate different products depending on your application.

Pulsation Dampeners & Spill Containment



Ashton range of pulsation dampeners are available in a range of materials depending on your application. These are design to absorb and equalize discharge surge. Therefor helping to provide a virtually surge free discharge flow.



Drum & IBC Pumps



Ashton range of RW15, RW20 and RW25 drum pumps are available in a range of materials from Polypropylene, PDVF, Aluminium and Stainless Steel. Ideal for emptying barrels and IBC, these are supplied with either 1 metre or 1.2 metre dip tubes as standard. Custom made tubes can be manufactured to order.

“One-Up” Diaphragms



WL GORE™ ONE-UP® PTFE Pump Diaphragms simply last longer!

All Ashton pumps are available with ONE-UP® Diaphragms, they last significantly longer than other conventional PTFE diaphragms. These diaphragms provide a dramatic improvement in service life and are considerably stronger, with greater flex life.

AT40



Specifications

Maximum Free Flow - Water	379 lpm (100 US Gpm)
Maximum Working Pressure	8.4 Barg (120 Psig)
Inlet/Outlet Port Size/Standard	1 1/2" NPT/BSP Female
Maximum Air Consumption	3.5 m ³ /min (125 scfm)
Maximum Dry Suction Lift - Water	5.5 metres (18 Feet)
Maximum Particle Size	4.8 mm (3/16 Inch)
Approximate Displacement/Stroke	1.96 Litres (0.5 US Gallons)
Typical Sound Level at 4.9 Bar (70 Psi)	77 dBA
Typical Working Temperature Limits	PP 5 - 65 °C/Kynar 5 - 80 °C
Elastomer Options - Diaphragms/Valves	PTFE/Santoprene/Buna-N

AT50



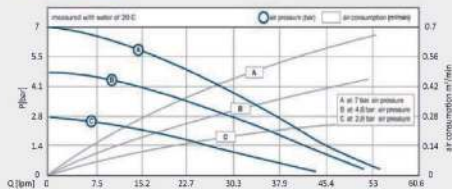
Specifications

Maximum Free Flow - Water	568 lpm (150 US Gpm)
Maximum Working Pressure	8.4 Barg (120 Psig)
Inlet/Outlet Port Size/Standard	2" ANSI/DIN Flanges
Maximum Air Consumption	4.9 m ³ /min (175 scfm)
Maximum Dry Suction Lift - Water	5.5 metres (18 Feet)
Maximum Particle Size	6.3 mm (1/4 Inch)
Approximate Displacement/Stroke	3.9 Litres (1.03 US Gallons)
Typical Sound Level at 4.9 Bar (70 Psi)	78 dBA
Typical Working Temperature Limits	PP 5 - 65 °C/Kynar 5 - 80 °C
Elastomer Options - Diaphragms/Valves	PTFE/Santoprene/Buna-N

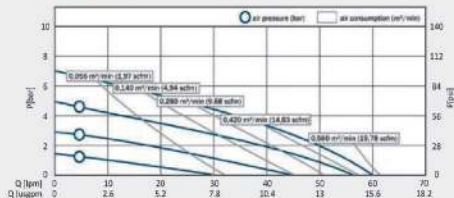


Performance Curves & Dimensional Drawings

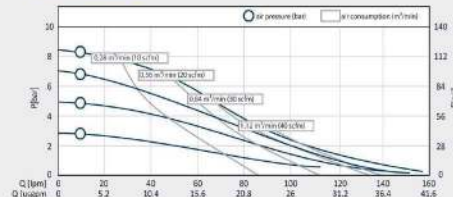
AT15



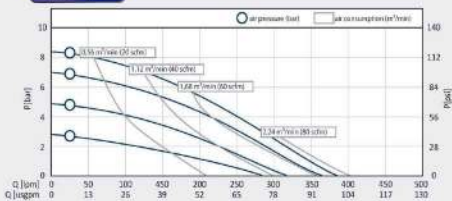
AT20



AT25

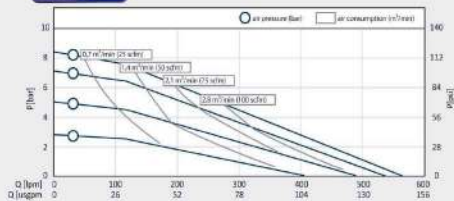


AT40

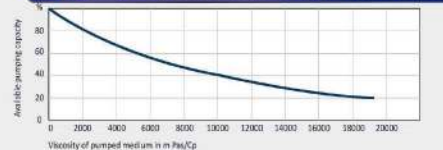


All pump performance curves are based on water at 20°C

AT05



Typical reduction with viscous fluids



Example: when pumping a product with a viscosity of 10000 mPa.s the capacity of the pump is reduced by 40% of its rated value based on water

PolyPump Ltd

Providing your pumping solutions

sales@polypump.co.uk

01296 488 294

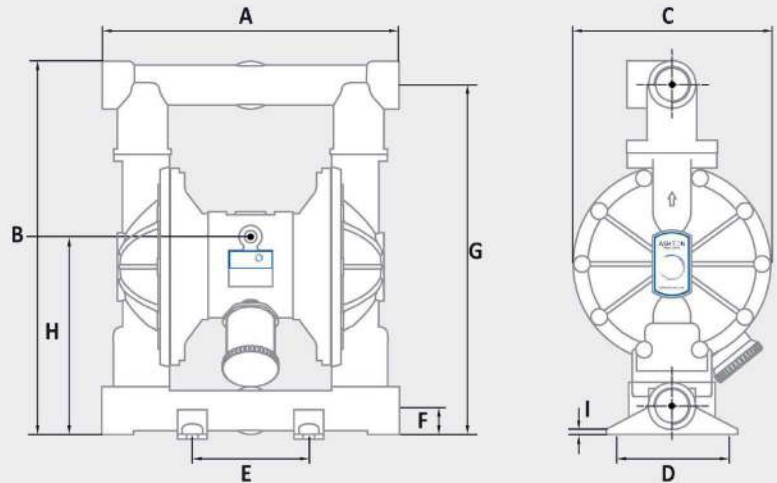
Non-Metallic Pumps

Pump Model	A	B	C	D	E	F	G	H	I
RW15 (1/2")	268	284	160	110	155	35	252	197	10
RW25 (1")	330	375	202	128	140	31	347	231	10
RW40 (1 1/2")	440	501	265	152	152	38	463	274	10
RW50 (2")	510	852	265	152	153	88	770	475	10

Metallic Pumps

Pump Model	A	B	C	D	E	F	G	H	I
RW20 (3/4")	225	276	160	110	176	38	244	197	20
RW25 (1")	305	369	202	128	140	25	347	225	10
RW40 (1 1/2")	400	506	265	152	152	40	465	272	10
RW50 (2")	460	760	318	153	153	50	718	430	10
Cast Iron RW50 (2")	450	605	318	153	153	50	565	330	10

All measurements shown are approximate only (millimeters) please refer to Ashton pumps data sheets for further details



Typical Dimensional Drawing of Ashton Pumps

For further information please contact
your local distributor:

CDR Pumps (UK) Ltd,
Wellingborough,
Northants.
Tel: 01933 674777
www.cdrpumps.co.uk



ASHTON
PUMPS

Ashton Pumps is a wholly owned subsidiary
of CDR Pumps (UK) Ltd. www.cdrpumps.co.uk

